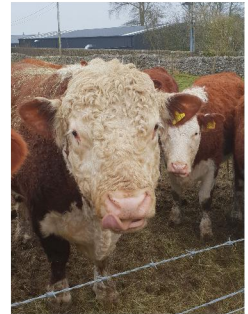




THE FARMING LIFE CENTRE
SUPPORTING FARMING & RURAL LIFE
IN THE PEAK DISTRICT

Supporting Farming & Rural Life in The Peak District

Did you know that The Farming Life Centre organises *Rural Social Groups* around Derbyshire? These are accessible to anyone who would like to spend an hour or so, meeting old friends and making new ones, over a cup of tea and piece of cake.



We can now announce that we will be running monthly, Rural Social Group meetings in **Matlock**. The first meeting will take place on Thursday 18th April, 1pm - 3pm at Matlock Meadows – a working diary farm in the heart of the Derbyshire Dales (Snitterton Road, Matlock, DE4 2JG). A light lunch will be provided at our launch meeting, we really hope you can join us.

This could be the group for you...

Throughout the year the group will enjoy a monthly get together where we will organise activities, guest speakers, outings and lunches to suit the needs and interests of this group.

Please come along and enjoy a cuppa, cake and chat and share your thoughts and ideas to help get this group up and running.

For more information please contact our Rural Social Group Coordinator;
Amanda Newton – 07971 521143 or info@thefarminglifecentre.org.uk

Funded by Derbyshire County Council & supported by Derbyshire Dales Health and Wellbeing Partnership'

